

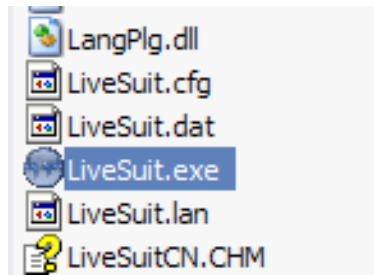
# Software Update Guides of TT2

**DO NOT NEED TO UPGRADE ON THE TABLET IF THE CURRENT FIRMWARE IS WORKING OKAY. THIS FIRMWARE UPGRADE IS PROVIDED TO TROUBLESHOOT THE TABLET, FIXING BUGS OR IF NEW VERSION OF FIRMWARE IS RELEASED. YOU MIGHT NEED HELP OF COMPUTER TECHNICIAN TO PERFORM THIS ESPECIALLY IF YOU ARE NOT FAMILIAR WITH INSTALLING SOFTWARE/DRIVER ON WINDOWS PC. THE GUIDE BELOW IS USING WINDOWS XP MACHINE AND OTHER WINDOWS OS WILL HAVE SIMILAR PROCEDURE.**

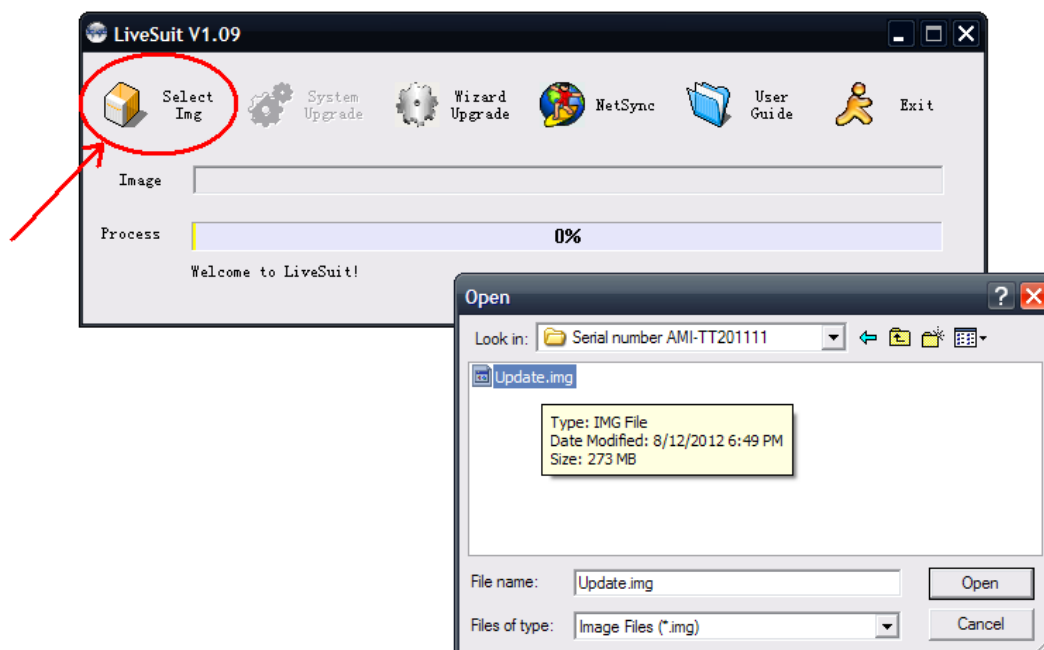
- 1. Download correct firmware file for your Amicroe tablet, unzip the download file to a folder to extract Firmware Image File (.img) & LiveSuit software. Run “LiveSuitPack\_version\_1.09.exe” file to extract the LiveSuit software. (If you received a warning to install USB driver as per picture below, choose “Continue Anyway”)**



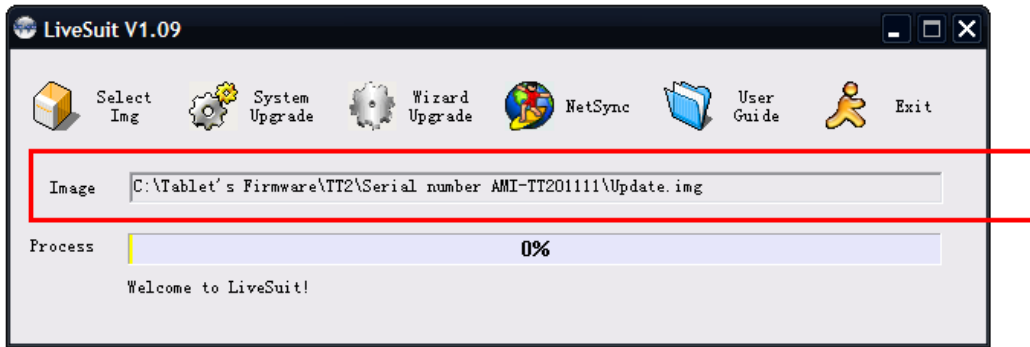
- 2. Once all files extracted, launch “LiveSuit.exe” found in folder. Click “No” on “LiveSuite User Wizard” dialog**



**3. Click on “Select Img” on the top left and Select the firmware file (\*.img) and click “Open”**



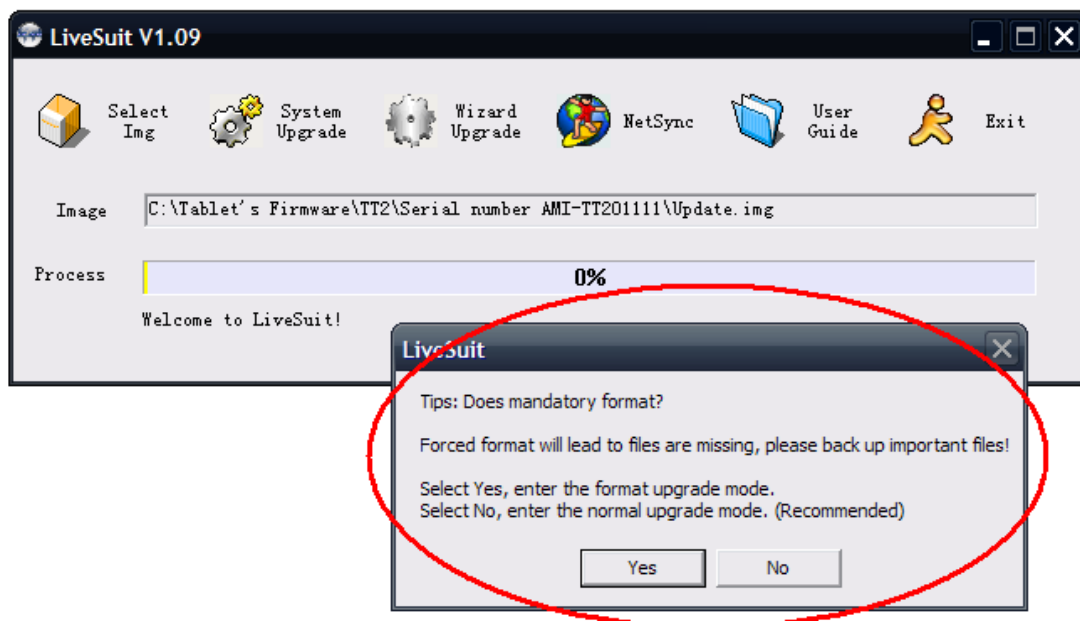
**4. Once the firmware has been selected as per picture below, LiveSuit is ready to detect Amicroe Android tablet and to perform firmware upgrade.**



## 5. Follow these steps below to start firmware updates:

- 5.1 Power OFF the device
- 5.2 Press and hold the “VOL-” button and quickly do step #5.3
- 5.3 Connect the device to the computer via USB cable
- 5.4 Keep press the “POWER” button around 20 times repeatedly (at 1 seconds interval), and then release “VOL-” button

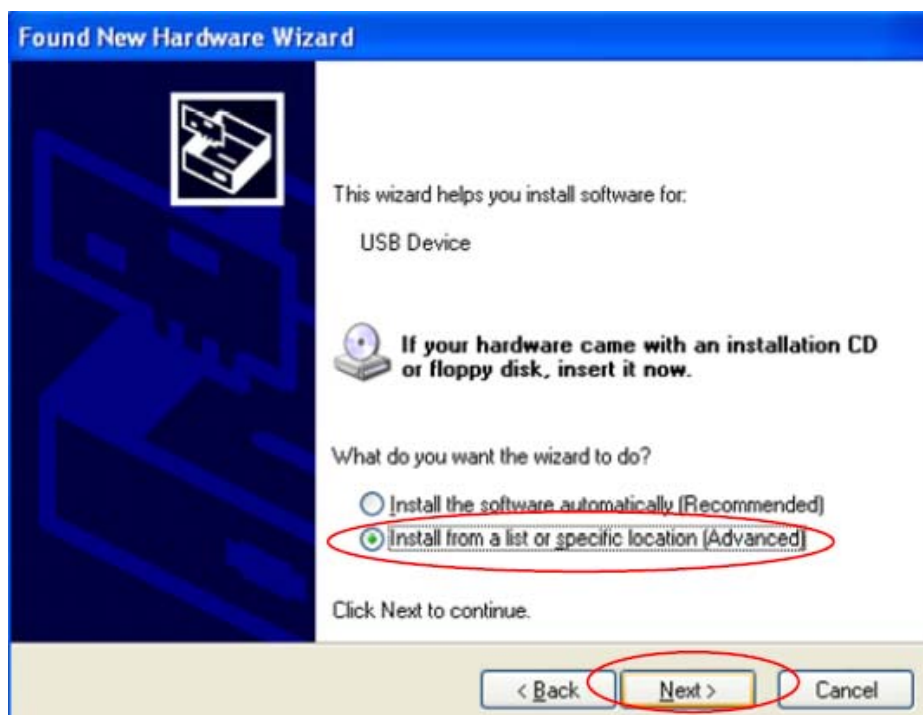
Remarks: if it's asked for USB driver installation (follow steps 5.5). If the LiveSuit did not detecting the tablet and did not show this windows in red circle below, please check if the device is powered off and repeat 5.2/5.3/5.4. If in occasion the tablet was not detected anymore by software, please try to press the reset button on the back of the tablet with a pin and repeat the step above.



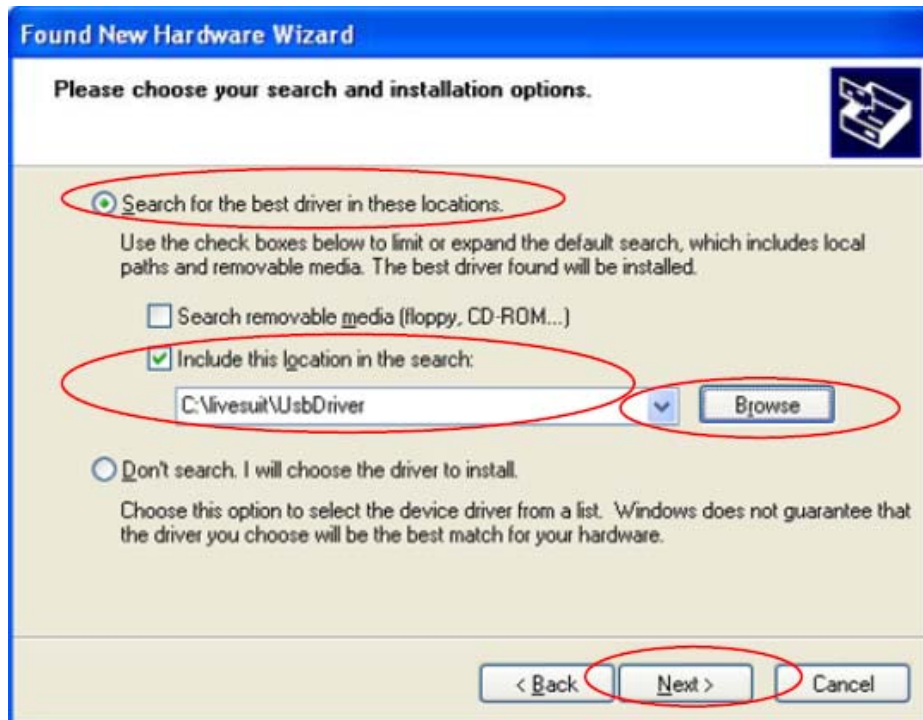
5.5 If LiveSuit could not find the USB driver it will show the Found New Hardware Wizard as per below, follow the step through to install the USB driver



Select “No, not this time”, then click” next”



Select “Install from a list or specific location (**Advanced**)”, then click “Next”



Click "browse" and select LiveSuit USBDriver folder to search drivers, then Click "Next"



Click: "Continue Anyway":

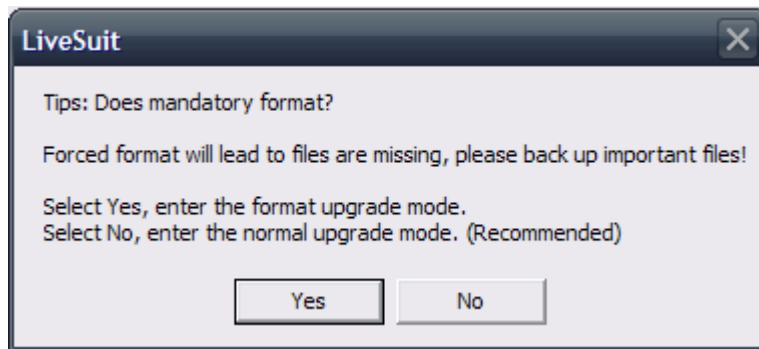


Wait until Windows finish copying the USB driver.



Then click "Finish".

5.6 When LiveSuit detected the tablet and ready to install this windows below will shown on the screen, please read carefully below for the options when deciding



- “Yes” to start updates the new software and it will ERASE all the existing data/setting currently on the tablet.
- “No” to start normal updates which the original data would be kept.

***\*Choose “No” as preferred option unless your tablet has corrupted data/setting which needs to be ERASED***

5.7 Once either “Yes” or “No” had been clicked, the LiveSuit will start the updating process. Please wait until bar reach 100% to finish the firmware upgrade. ***Do not interrupt while the upgrade is in process, it will cause the tablet not able to boot up.***

