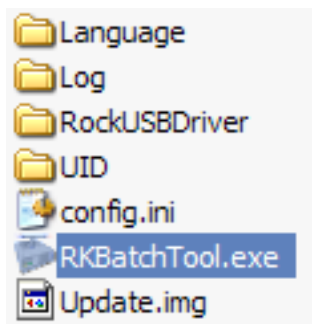


Software Update Guides of TTCONNECT

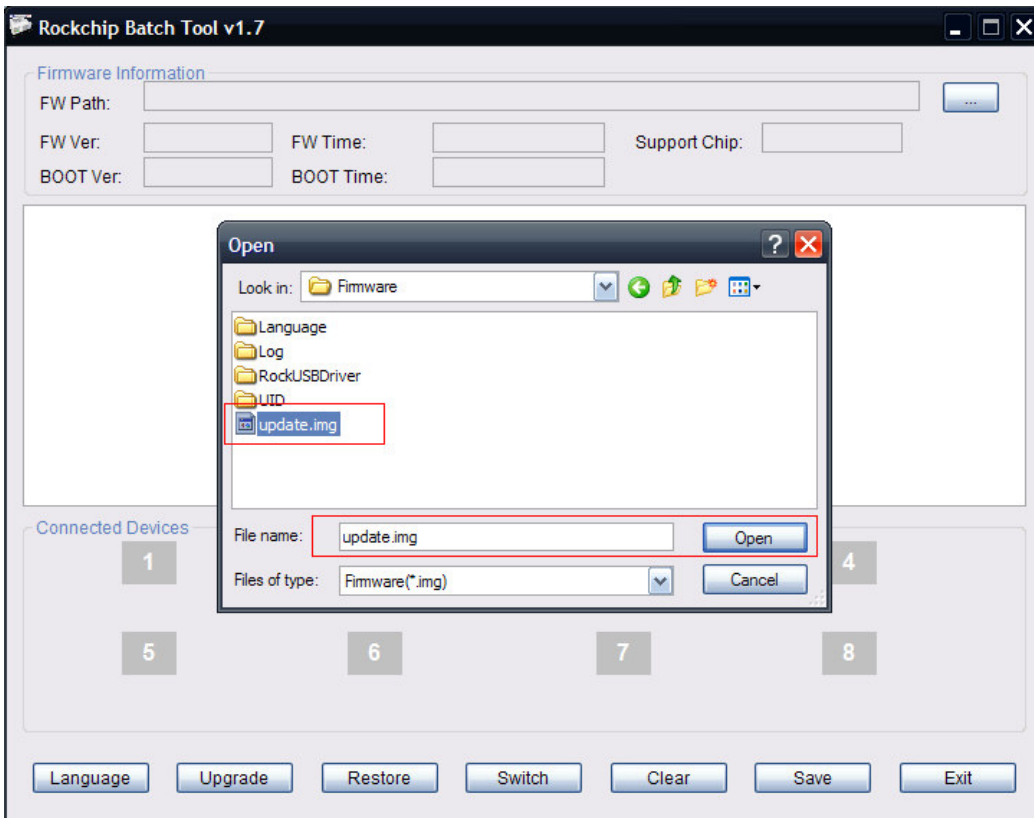
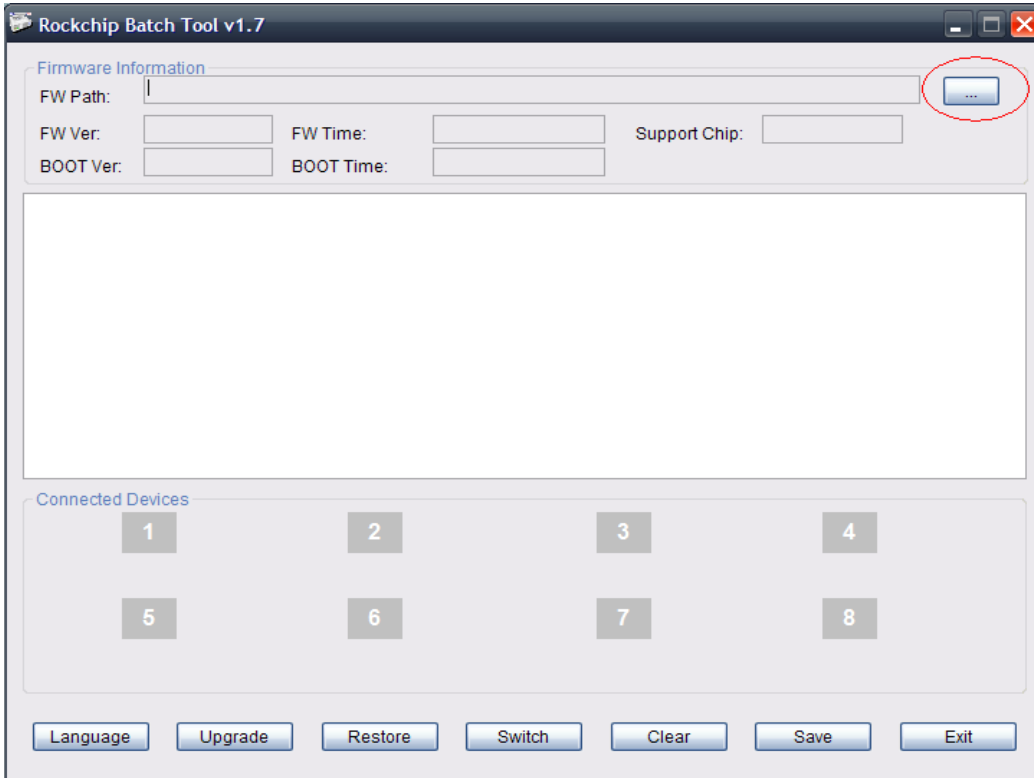
DO NOT NEED TO UPGRADE ON THE TABLET IF THE CURRENT FIRMWARE IS WORKING OKAY. THIS FIRMWARE UPGRADE IS PROVIDED TO TROUBLESHOOT THE TABLET, FIXING BUGS OR IF NEW VERSION OF FIRMWARE IS RELEASED. YOU MIGHT NEED HELP OF COMPUTER TECHNICIAN TO PERFORM THIS ESPECIALLY IF YOU ARE NOT FAMILIAR WITH INSTALLING SOFTWARE/DRIVER ON WINDOWS PC. THE GUIDE BELOW IS USING WINDOWS XP MACHINE AND OTHER WINDOWS OS WILL HAVE SIMILAR PROCEDURE.

WARNING: This firmware update will erase current setting and apps stored in the tablet, please consider to backup first before performing firmware upgrade.

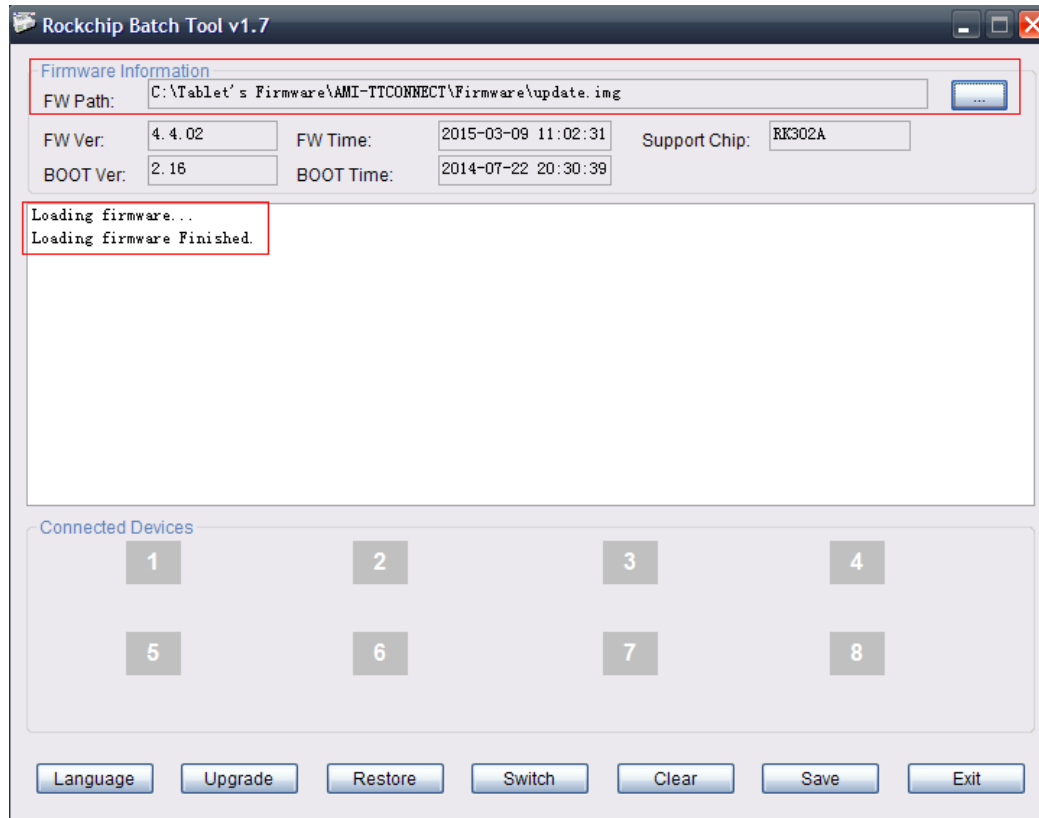
- 1. Download correct firmware file for your Amicroe tablet, unzip the download file to a folder to extract Firmware Image File (.img) & RKBatchTool software.**
- 2. Once all files extracted, launch “RKBatchTool.exe” found in extract folder.**



- 3. Click on “...” on the top right and Select the firmware file (*.img) and click “Open”**



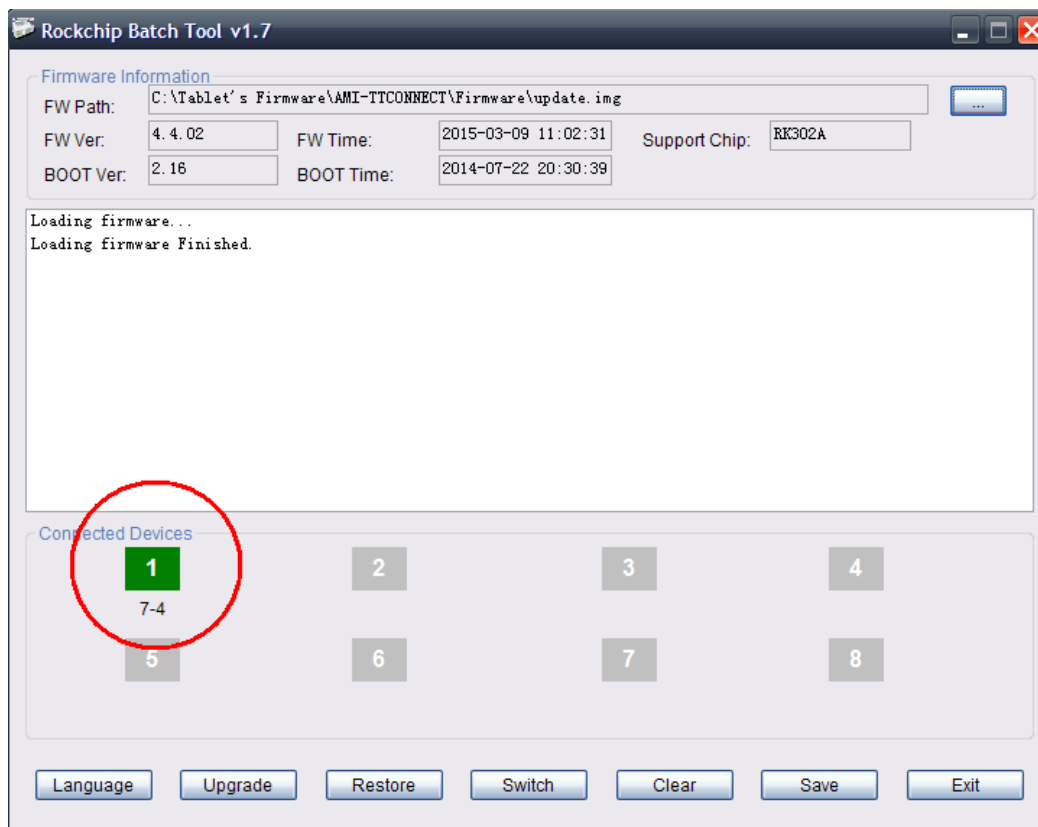
4. Once the firmware has been selected as per picture below, RKBatchTool is ready to detect Amicroe Android tablet and to perform firmware upgrade.



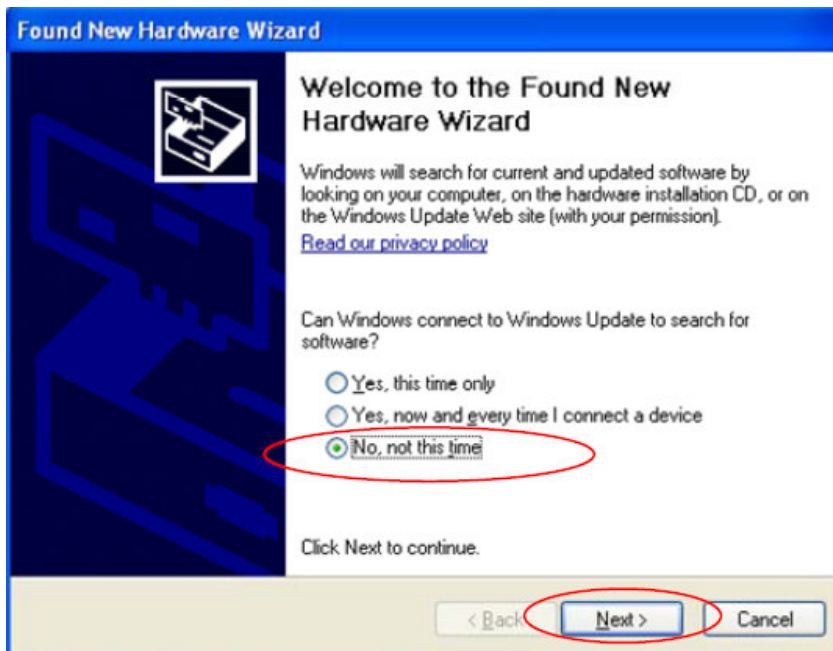
5. Follow these steps below to start firmware updates:

- 5.1 Power OFF the device
- 5.2 Press and hold the “volume up” button and quickly do step #5.3 while this volume up button still pressed.
- 5.3 Connect the device to the computer via USB cable and hold power button for few seconds, the software will start detecting the tablet (if your Windows asking for USB driver follow step 5.5)
- 5.4 Once you see the picture below, RKBatchTools successfully detected the tablet.

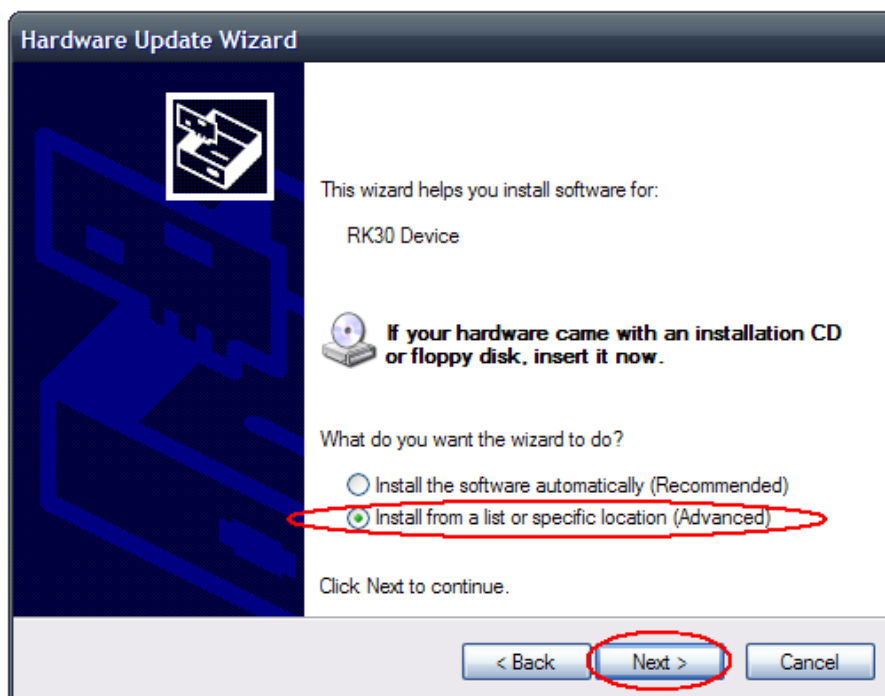
Remarks: if it's asked for USB driver installation (follow steps 5.5). If the RKBatchTool did not detecting the tablet and did not show the box with green colour, please check if the device is powered off and repeat 5.2/5.3/5.4. If in occasion the tablet was not detected anymore by software, please try to press the reset button on the back of the tablet with a pin and repeat the step above.



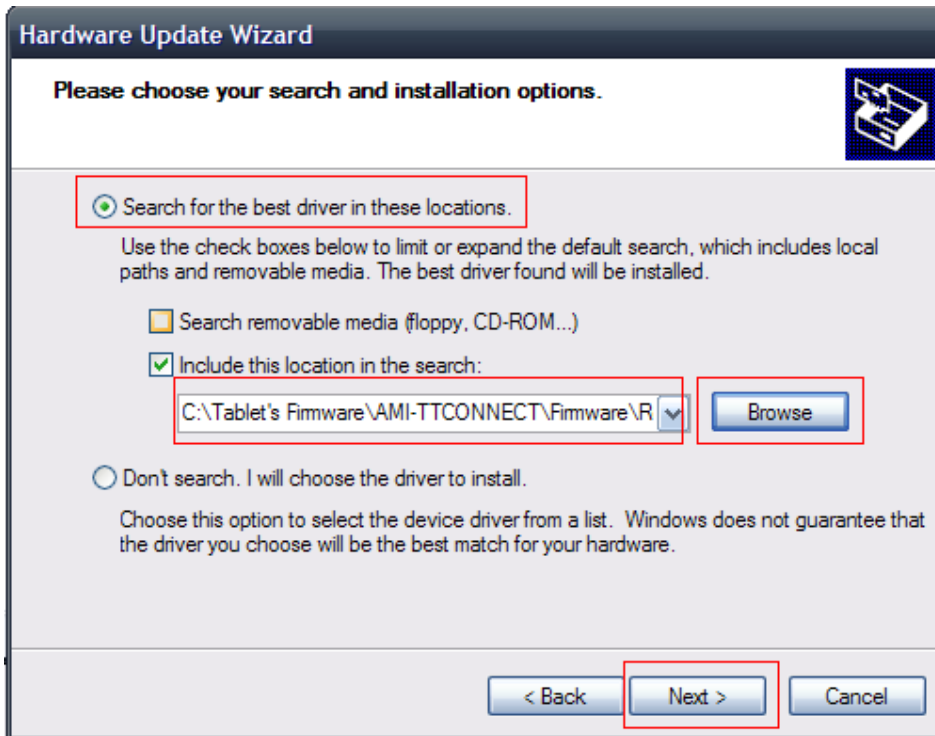
5.5 If RKBatchTool could not found the USB driver it will shown the Found New Hardware Wizard as per below, follow the step through to install the USB driver



Select "No, not this time", then click "next"



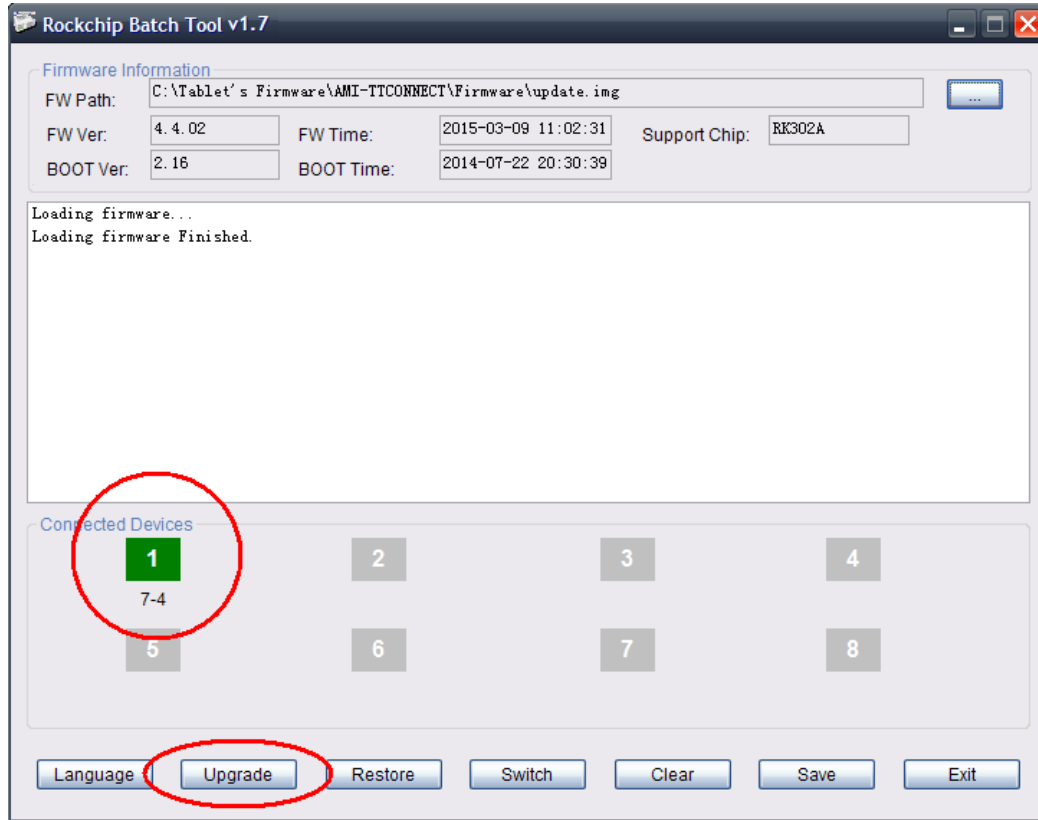
Select "Install from a list or specific location (**Advanced**)", then click "Next"



Click "browse" and select RockUSBdriver folder, then pick a folder match with your operating system to search drivers, then Click " Next". If Windows warning pop up, click:"Continue Anyway".

Wait until Windows finish copying the USB driver. Then click "Finish".

5.6 When RKBatchTool detected the tablet and ready to install, it will shown green colour box on #1 connected device.



5.7 Click Upgrade button (**this will erase current setting and apps stored in the tablet, please consider to backup first before performing firmware upgrade**), the software will start the updating process; the connected device box #1 will shown as yellow colour and it blinking during upgrading process. Please wait until you got confirmation "Upgrade Done Success" as per picture below. *Do not interrupt while the upgrade is in process, it will cause the tablet not able to boot up.*

